

|||
HOUSE OF
CAVANI
|||





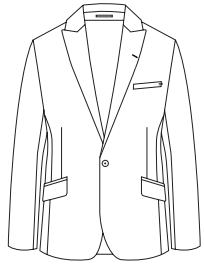


CONTENTS

- TAILORING.....01
- SHIRTS.....25
- POLOS & TSHIRTS.....43
- BOYSWEAR.....51
- CONTACT.....62



CARIDI SAGE 3PC SUIT



TAILLE

REGULAR

UK	EU	UK	EU	UK	EU
34 - 52	44 - 62	34 - 52	44 - 62	28 - 46	46 - 56

COMPOSITION

61% POLYESTER
39% VISCOSE

61% POLYESTER 39%
VISCOSE

61% POLYESTER
39% VISCOSE

INFORMATION

1 BOUTON
REVERS EN POINTE
SLIMFIT

5 BOUTONS
CEINTURE RÉGLABLE

PANTALON PLAT

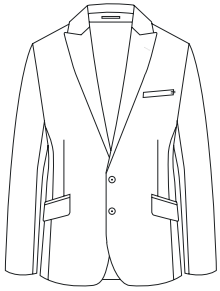


GREEN





SPECTER 3PC SUIT



TAILLE

UK	EU	UK	EU	UK	EU
34 - 52	44 - 62	34 - 52	44 - 62	28 - 46	44 - 62

COMPOSITION

55% COTON
45% LINEN

55% COTON
45% LINEN

55% COTON
45% LINEN

INFORMATION

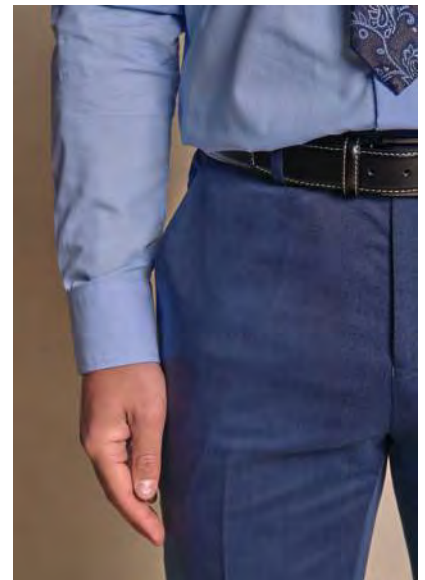
2 BOUTONS
COL POINTE
SLIM FIT

5 BOUTONS
CEINTURE RÉGLABLE

PANTALON PLAT

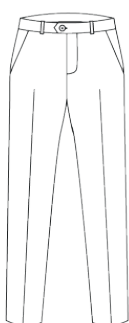
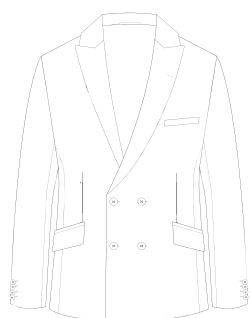


NAVY





VICTORIOUS 2PC SUIT



TAILLE

UK EU
34 - 52 44 - 62

UK EU
28 - 46 44 - 62

COMPOSITION

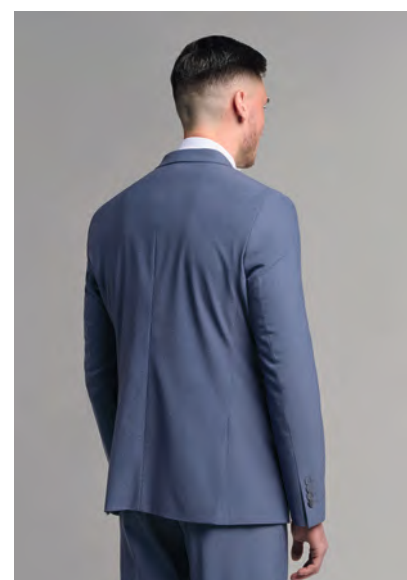
52% POLYESTER
43% LAINE
5% ELASTANE

52% POLYESTER
43% LAINE
5% ELASTANE

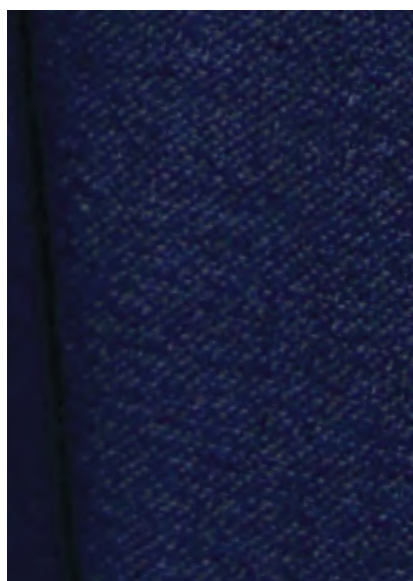
INFORMATION

CROISÉ
SLIM FIT
LAINE QUALITÉ PREMIUM
TISSU EXTENSIBLE

PANTALON PLAT
TISSU EXTENSIBLE



NAVY

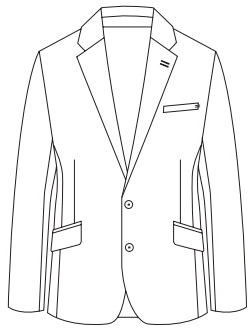


DOVE





KRAKEN 2PC SUIT



TAILLE

<u>UK</u>	<u>EU</u>
34 - 52	44 - 62

<u>UK</u>	<u>EU</u>
28 - 46	44 - 62

COMPOSITION

70% POLYESTER
22% VISCOSE
7% LIN
1% ELASTANE

70% POLYESTER
22% VISCOSE
7% LIN
1% ELASTANE

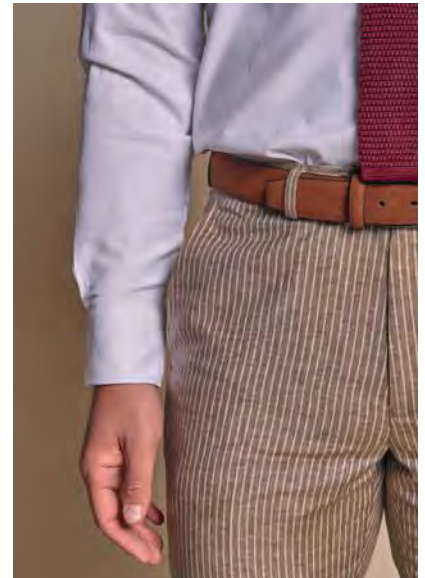
INFORMATION

2 BOUTONS
DEMI-DOUBLÉ
SLIM FIT
TISSU STRETCH

PANTALON PLAT
TISSU EXTENSIBLE

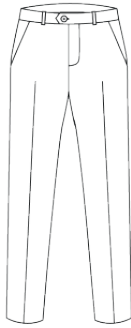
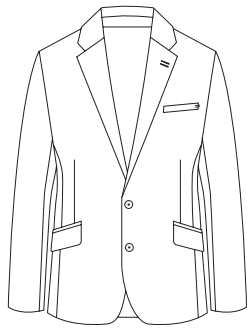


BEIGE





SIREN 2PC SUIT



TAILLE

UK EU
34 - 52 44 - 62

UK EU
28 - 46 44 - 62

COMPOSITION

87% POLYESTER
10% RAYON
3% SPANDEX

87% POLYESTER
10% RAYON
3% SPANDEX

INFORMATION

2 BOUTONS DEMI-DOUBLÉ
SLIM FIT
SEERSUCKER NATURAL
STRETCH

PANTALON PLAT
SEERSUCKER NATURAL STRETCH



SKY

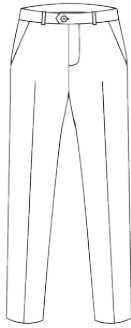
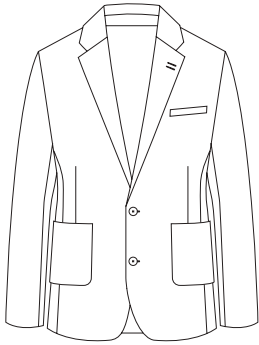


NAVY





RIPLEY 2PC SUIT



TAILLE

<u>UK</u>	<u>EU</u>
34 - 52	44 - 62

<u>UK</u>	<u>EU</u>
28 - 46	44 - 62

COMPOSITION

67% POLYESTER
32% VISCOSE
1% ELASTANE

67% POLYESTER
32% VISCOSE
1% ELASTANE

INFORMATION

2 BOUTONS DEMI-DOUBLÉ
POCHES PLAQUÉES
SLIM FIT
TISSU STRETCH

PANTALON PLAT
TISSU STRETCH

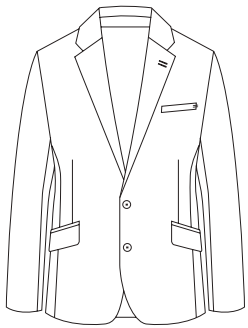


BEIGE





SENNAN BLAZER



TAILLE

UK

EU

34 - 52

44 - 62

COMPOSITION

70% POLYESTER

22% VISCOSE

7% LIN

1% ELASTANE

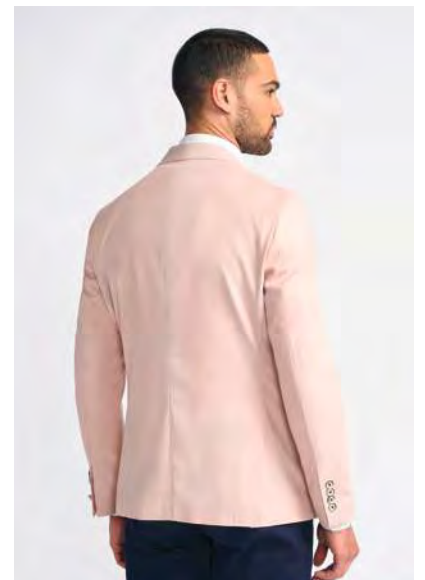
INFORMATION

2 BOUTONS

DEMI-DOUBLÉ

SLIM FIT

TISSU STRETCH

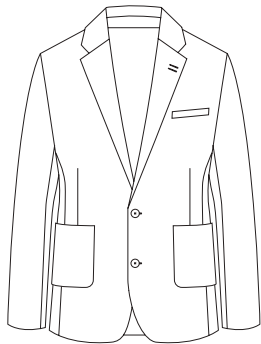


PINK





JAMIE BLAZER



TAILLE

<u>UK</u>	<u>EU</u>
34 - 52	44 - 62

COMPOSITION

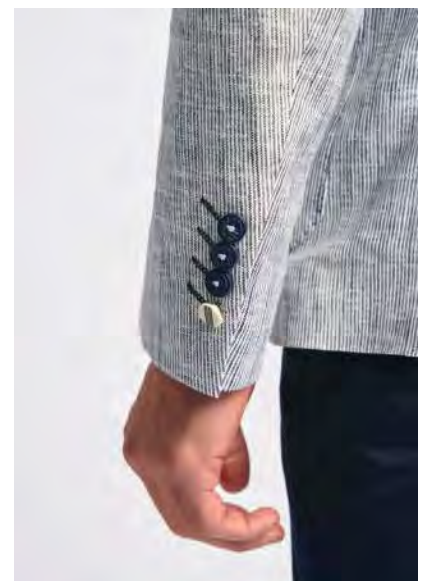
52% LINEN
48% RAYON

INFORMATION

2 BOUTONS
DEMI-DOUBLÉ
PACHES PLAQUÉES
SLIM FIT TISSU STRETCH

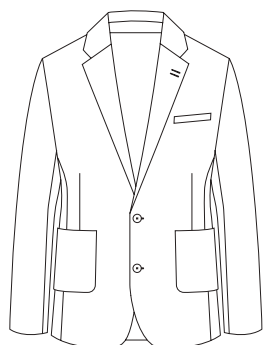


GREY





JULIAN BLAZER



TAILLE

UK

EU

34 - 52

44 - 62

COMPOSITION

70% POLYESTER

25% VISCOSE

5% SPANDEX

INFORMATION

2 BOUTONS

DEMI-DOUBLÉ

POCHES PLAQUÉES

SLIM FIT

SEERSUCKER NATURAL STRETCH

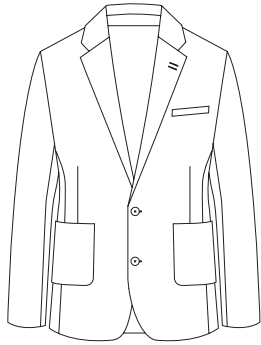


NAVY





RIVA BLAZER



TAILLE

UK

EU

34 - 52

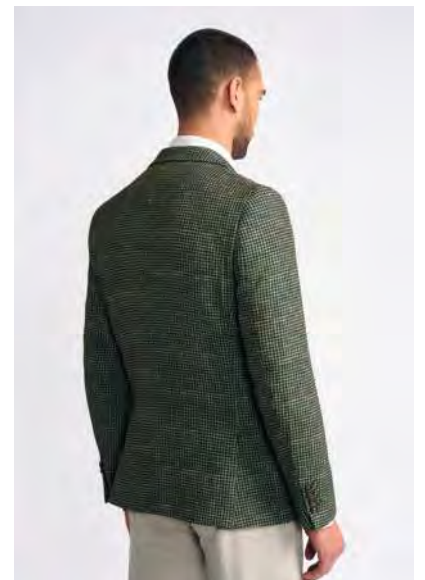
44 - 62

COMPOSITION

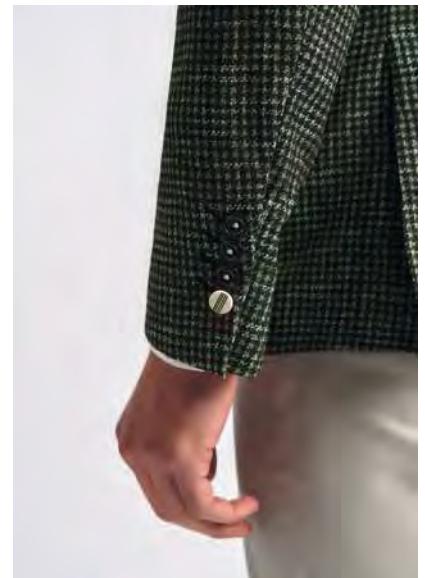
100% POLYESTER

INFORMATION

2 BOUTONS
DEMI-DOUBLÉ
POCHES PLAQUÉES
SLIM FIT
TISSU STRETCH

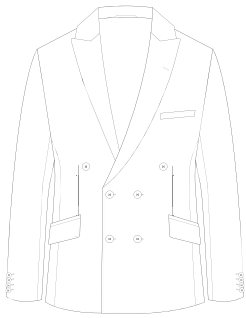


GREEN





ROMEO BLAZER



TAILLE

UK

EU

34 - 52

44 - 62

COMPOSITION

68% POLYESTER

30% RAYON

2% SPANDEX

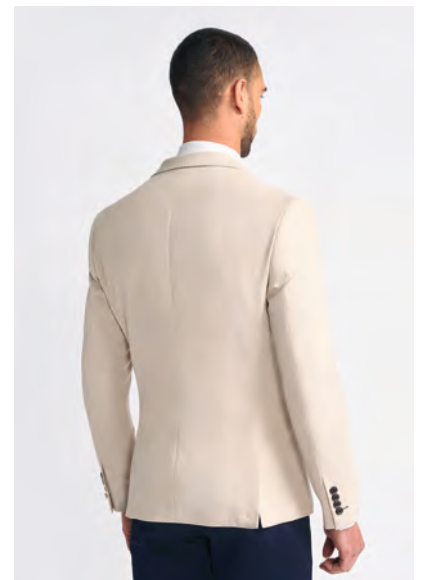
INFORMATION

CROISÉ

DEMI-DOUBLÉ

SLIM FIT

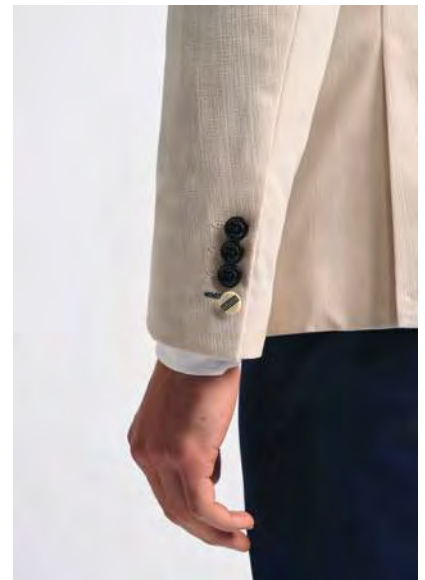
TISSU STRETCH



ELECTRIC BLUE

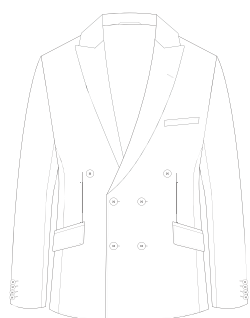


BEIGE





SERGIO BLAZER



TAILLE

UK

EU

34 - 52

44 - 62

COMPOSITION

68% POLYESTER

28% VISCOSE

4% SPANDEX

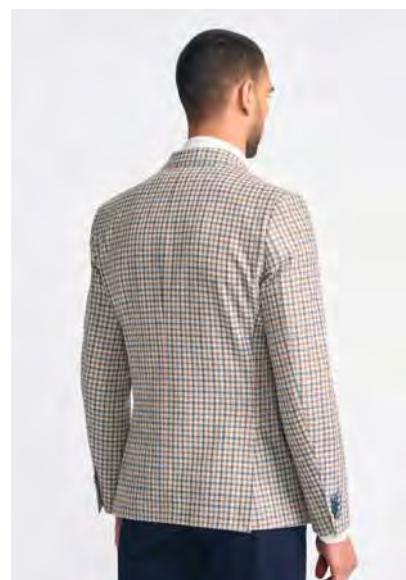
INFORMATION

CROISÉ

DEMI-DOUBLÉ

SLIM FIT

TISSU STRETCH



BEIGE





ANTHEM SHIRT



TAILLE

S - 3XL

COMPOSITION

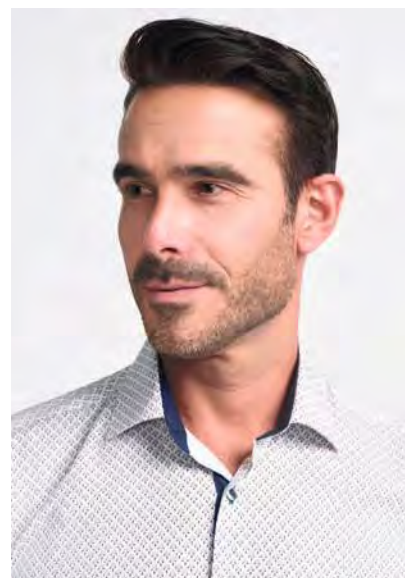
97% COTON
3% ELASTANE

INFORMATION

COUPE AJUSTÉE
MANCHES LONGUES
COL BOUTONÉS
CONFORT STRETCH



BODY FABRIC





BENTON SHIRT



TAILLE

S - 3XL

COMPOSITION

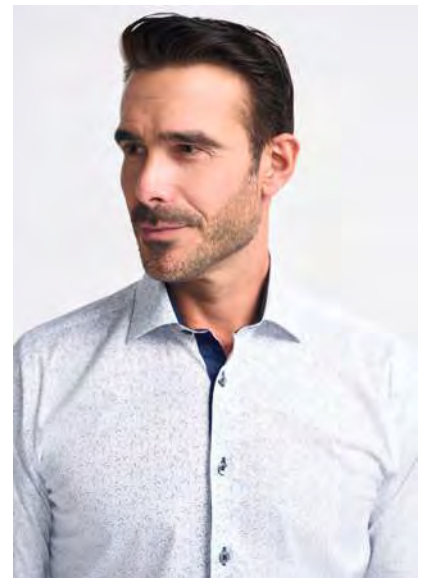
97% COTON
3% ELASTANE

INFORMATION

COUPE AJUSTÉE
MANCHES LONGUES
COL FRANÇAIS
CONFORT STRETCH



BODY FABRIC





BREEZE SHIRT



TAILLE

S - 3XL

COMPOSITION

97% COTON
3% ELASTANE

INFORMATION

COUPE AJUSTÉE
MANCHES LONGUES
COL FRANÇAIS
CONFORT STRETCH



PINK





MARINA SHIRT



TAILLE

S - 3XL

COMPOSITION

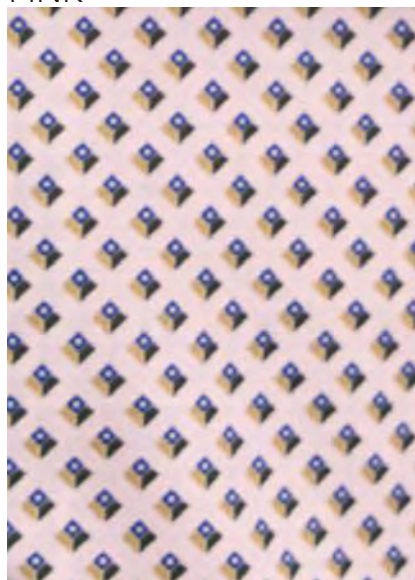
97% COTON
3% ELASTANE

INFORMATION

COUPE AJUSTÉE
MANCHES LONGUES
COL FRANÇAIS
CONFORT STRETCH



PINK





CONWAY SHIRT



TAILLE

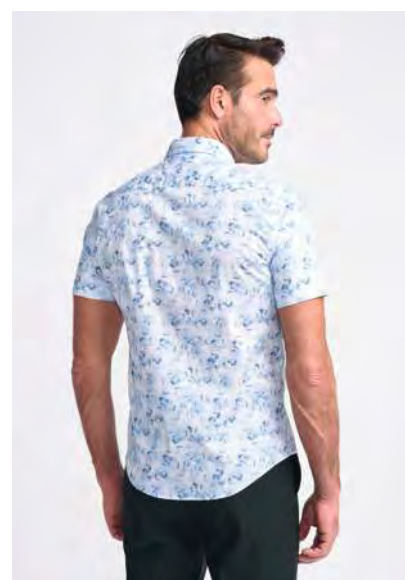
S - 3XL

COMPOSITION

97% COTON
3% ELASTANE

INFORMATION

COUPE AJUSTÉE
MANCHES COURTES
COL FRANÇAIS
CONFORT STRETCH



SKY





JENNA SHIRT



TAILLE

S - 3XL

COMPOSITION

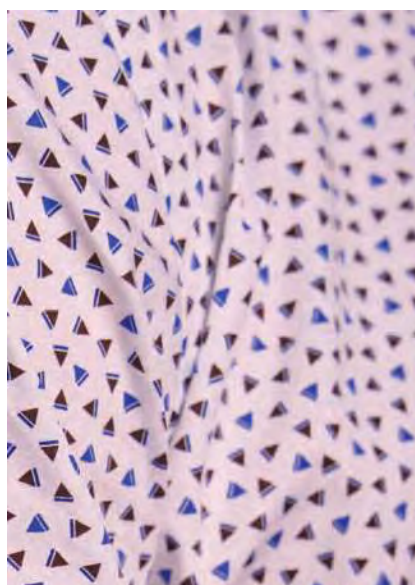
97% COTON
3% ELASTANE

INFORMATION

COUPE AJUSTÉE
MANCHES COURTES
COL FRANÇAIS
CONFORT STRETCH



PINK





KAI SHIRT



TAILLE

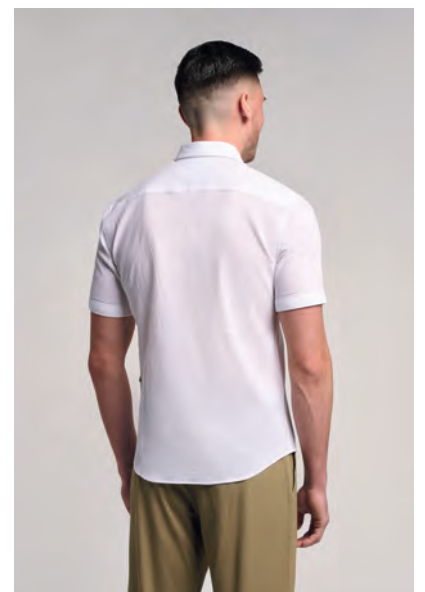
S - 2XL

COMPOSITION

98% COTON
2% SPANDEX

INFORMATION

COUPE AJUSTÉE
MANCHES COURTES
COL FRANÇAIS
SEERSUCKER NATURAL STRETCH



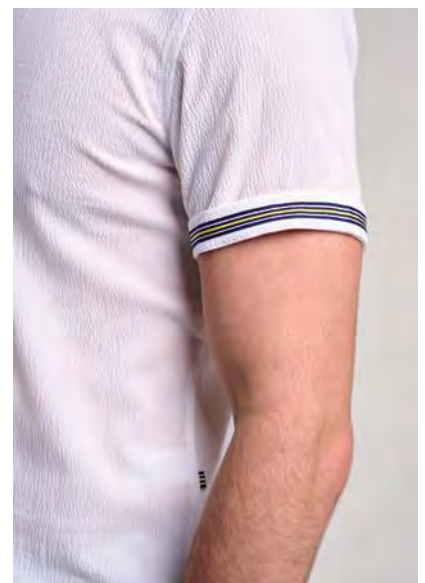
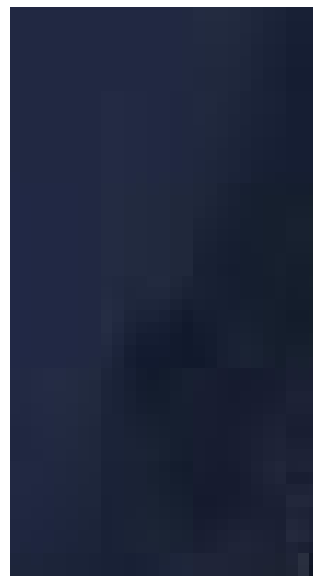
WHITE



SKY



NAVY





LIMA SHIRT



TAILLE

S - 3XL

COMPOSITION

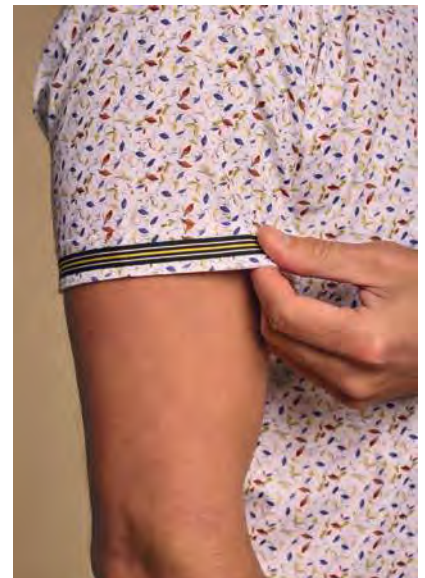
97% COTON
3% ELASTANE

INFORMATION

COUPE AJUSTÉE
MANCHES COURTES
COL FRANÇAIS
CONFORT STRETCH



BODY FABRIC





SINTON SHIRT



TAILLE

S - 3XL

COMPOSITION

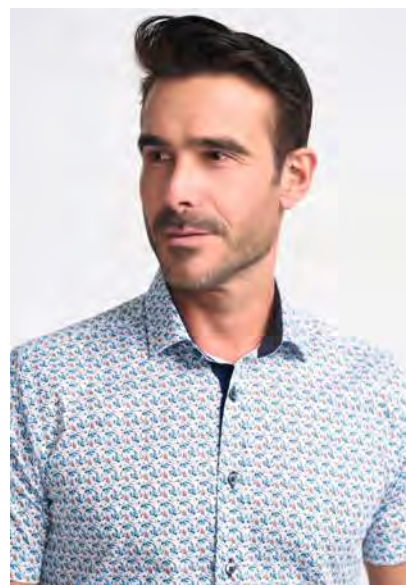
97% COTON
3% ELASTANE

INFORMATION

COUPE AJUSTÉE
MANCHES COURTES
COL FRANÇAIS
CONFORT STRETCH

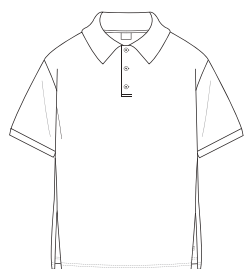


SKY





HARPOON POLO



TAILLE

S - 3XL

COMPOSITION

50% COTON
45% POLYESTER
5% ELASTANE

INFORMATION

POLO
COL CÔTELÉ
MANCHES COURTES
3 BOUTONS
NATURAL STRETCH

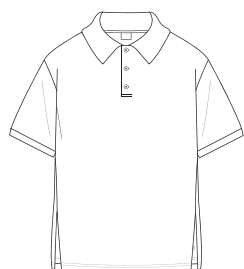


BODY FABRIC





LANCE POLO



TAILLE

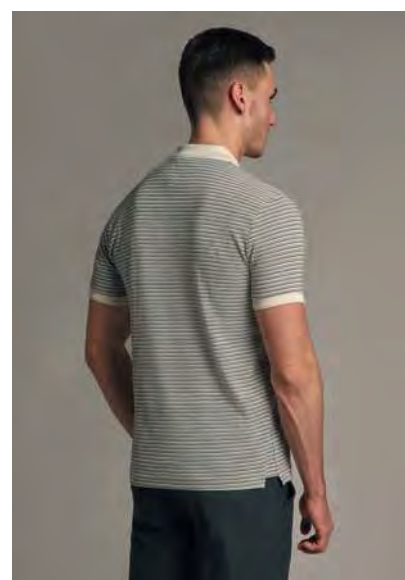
S - 3XL

COMPOSITION

100% COTON

INFORMATION

POLO
COL CÔTELÉ
MANCHES COURTES
3 BOUTONS
NATURAL STRETCH

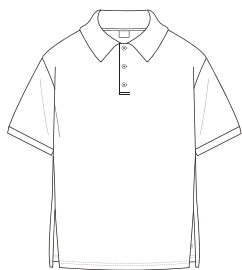


BEIGE





SABER POLO



TAILLE

S - 3XL

COMPOSITION

55% POLYESTER
45% COTON

INFORMATION

POLO
COL CÔTELÉ
MANCHES COURTES
3 BOUTONS
NATURAL STRETCH

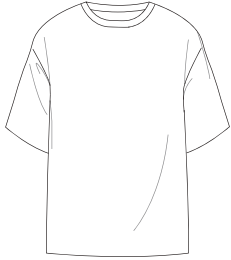


GREY





BYRON SHIRT



TAILLE

S - 3XL

COMPOSITION

100% COTON

INFORMATION

T-SHIRT RDC
MANCHES COURTES
NATURAL STRETCH



ECRU



NAVY

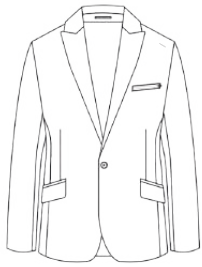


SAND





CARIDI SAGE 3PC SUIT



TAILLE

UK + EU
AGE 1 - AGE 15

UK + EU
AGE 1 - AGE 15

UK + EU
AGE 1 - AGE 15

COMPOSITION

61% POLYESTER
39% VISCOSE

61% POLYESTER
39% VISCOSE

61% POLYESTER
39% VISCOSE

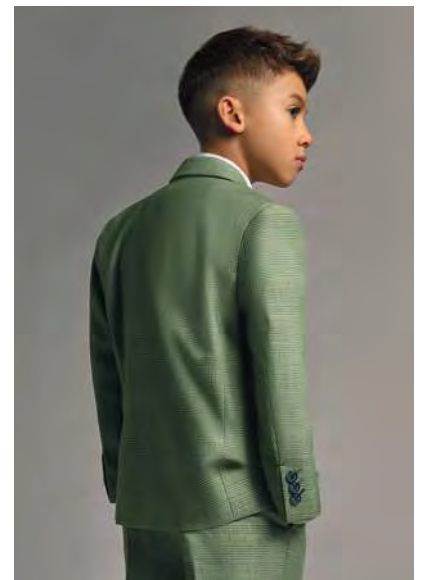
INFORMATION

1 BOUTONS
REVERS POINTE
DOUBLURE COMPLÈTE

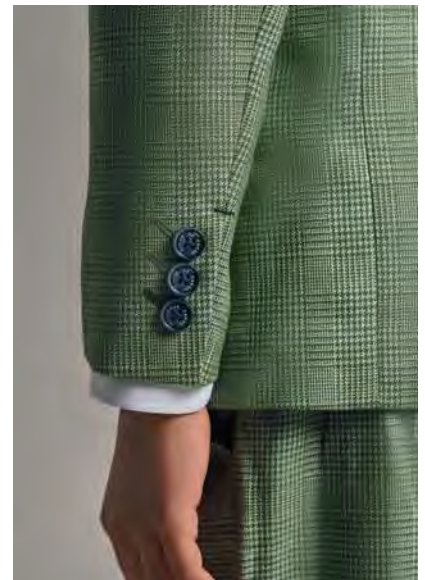
SANS REVERS
4 BOUTONS

PANTALON PLAT
TAILLE ÉLASTIQUÉE

NETTOYAGE À SEC UNIQUEMENT

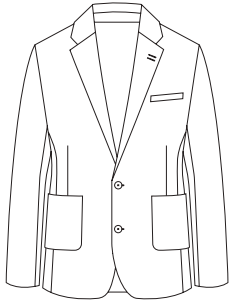


SAGE





JAMIE BLAZER



TAILLE

6 MOIS À 14 ANS

COMPOSITION

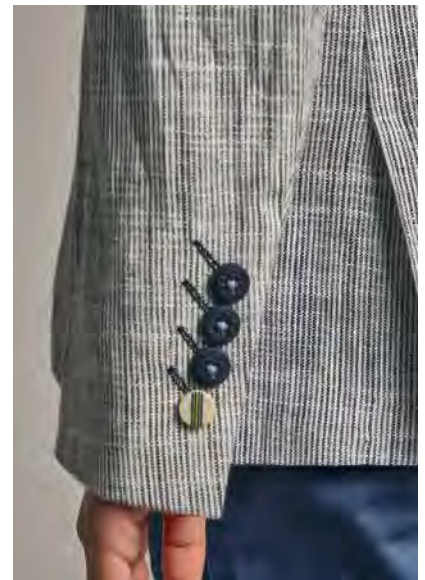
52% LIN
48% RAYON

INFORMATION

2 BOUTONS
DEMI-DOUBLÉ
SLIM FIT
TISSU STRETCH

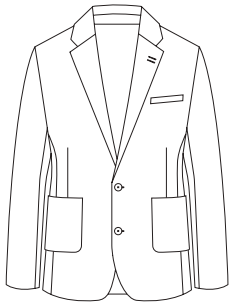


GREY





RIVA BLAZER



TAILLE

UK + E.U

6 MOIS- 14 YANS

COMPOSITION

100% POLYESTER

INFORMATION

2 BOUTONS
DEMI-DOUBLÉ
POCHES PLAQUÉES
TISSU STRETCH



BODY FABRIC





NOBLE SHIRT



TAILLE

UK + EU

1-2, 3-4, 5-6, 7-8, 9-10, 11-12, 13-14

COMPOSITION

50% COTON

50% POLYESTER

INFORMATION

COUPE AJUSTÉE

MANCHES LONGUES

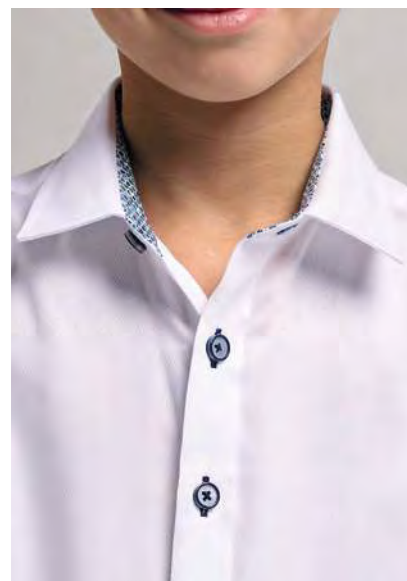
COL FRANÇAIS



WHITE

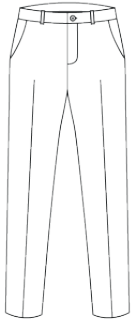


SKY





DAKOTA CHINO



TAILLE

UK	EU
23 - 29	39 - 43

COMPOSITION

97% COTON
3% ELASTANE

INFORMATION

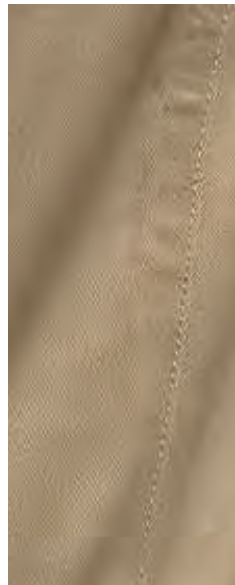
PANTALON PLAT
TISSU EXTENSIBLE



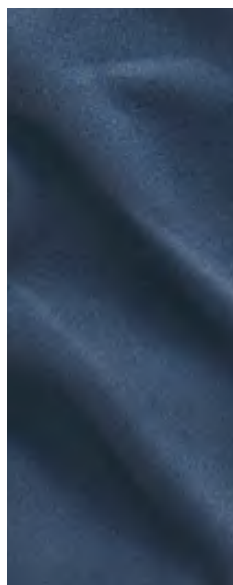
STONE



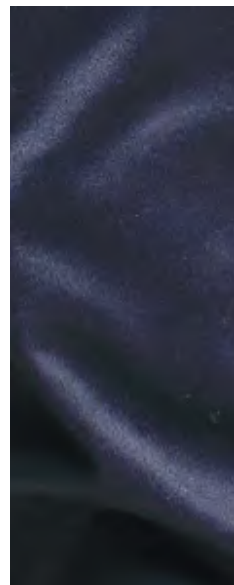
SLATE



COBALT



NAVY





BUSINESS CONTACT



showroom

CO[♂]

Nicolas GROSSMANN +33 6 11 27 92 06 nicolas.grossmann@diftex.fr



Patrick CAHEN +33 6 76 29 48 92 sales@diftex.fr



David GIANNELLA +33 6 30 69 54 39 sales@gf-investment.fr





PROUD PARTNERS WITH



Children's Hospital



J THE JOCKEY CLUB